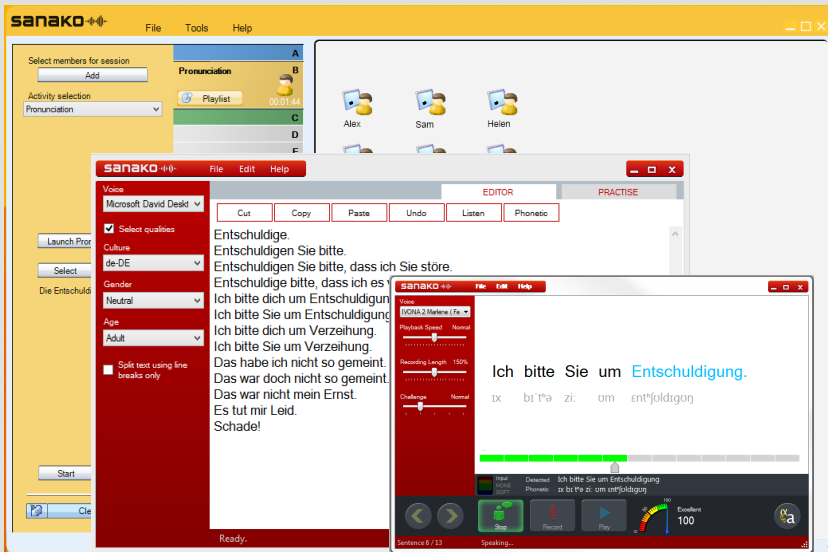


Study Pronunciation Activity Quick Guide



Why?

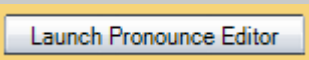
Practice pronunciation with help of automatic speech recognition
 Convert any text into a pronunciation exercise
 Benefit from all Study features during pronunciation practice

How?

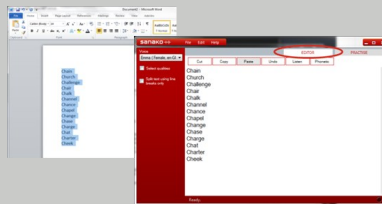
Build easily accessible exercise library with Pronounce editor
 Remotely open and close exercises
 View student status
 Collect and evaluate student work

Creating exercises

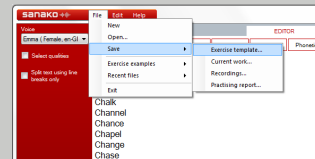
1. Start Pronounce with Editor



2. Copy and paste the source text into the Editor view

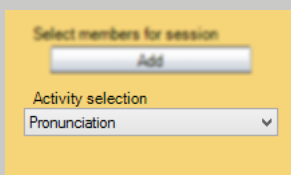


3. Save the file into the Exercise folder for Pronunciation activity

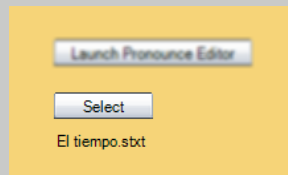


Starting a pronunciation exercise

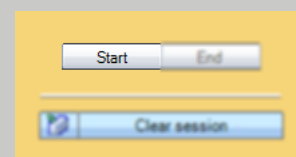
1. Open Pronunciation activity



2. Select the file

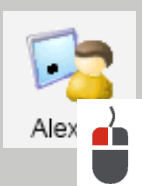


3. Start activity

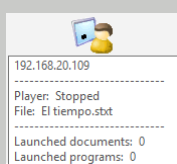


Monitoring students

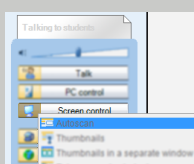
Click on student to listen



Hover to view status

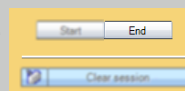


Use autoscan to view and listen

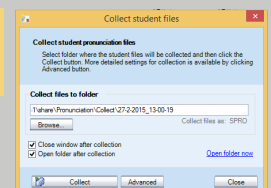


Collecting student work

When students are ready, click End



Collect the student recordings and a pronunciation report



Name	Date modified	Type	Size
Student 1.spro	3.5.2026 7:20	Pronunciation work	73 KB
El Tiempo - Student1	3.5.2026 7:20	Office Open XML ...	19 KB